

# ANITA SHAPOLSKY ART FOUNDATION

---

20 West Broadway, Jim Thorpe, PA 18229 [www.asartfoundation.org](http://www.asartfoundation.org)  
NYC Office: 152 East 65<sup>TH</sup> Street, NYC, 10065 Phone: 212-249-2393 Fax: 212-452-1096

---

## Immediate Press Release

### Liz Whitney Quisgard

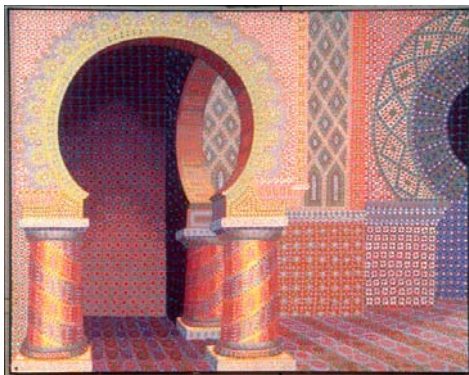
#### PATTERN AND STRUCTURE

July 3 – August 22, 2010

The Anita Shapolsky Art Foundation is pleased to announce a most extraordinary installation of exotic paintings, sculptured columns covered in geometric patterns and wall hangings that create an oriental environment. Thousands and thousands of colored dots are placed meticulously upon canvases to create kaleidoscopic images by Liz Whitney Quisgard, an acclaimed Soho, N.Y. artist.

Her goal is to surprise and engage the mind by seducing the eyes. Her creative presence crosses six decades, acknowledged by honors and awards, exhibitions, teaching and writing experiences and works in distinguished private and public collections.

### Meet the artist: Saturday, July 3, 3 – 6 PM



Liz Whitney Quisgard, Moroccan Interior, 1998  
Acrylic on canvas, 4' x 5 1/2'



Liz Whitney Quisgard,  
2 Ellipses, 2008, Yarn on buckram, 50" x 30" (each);  
2 Turnings, 2001, Acrylic on maple, 36" x 8" (each)

**ALSO ON VIEW (upper level)** - Paintings and sculpture from the Foundation's permanent collection: Works by Ernest Briggs, Seymour Boardman, John Hultberg and others from the 1950s-1980s.

Foundation opens: May 29<sup>th</sup> thru October 18<sup>th</sup>, 2010; Hours: Sat. & Sun., 11am-5pm and by appointment. Contact: (570) 325-5815 or (610) 442-4148. [www.asartfoundation.org](http://www.asartfoundation.org)